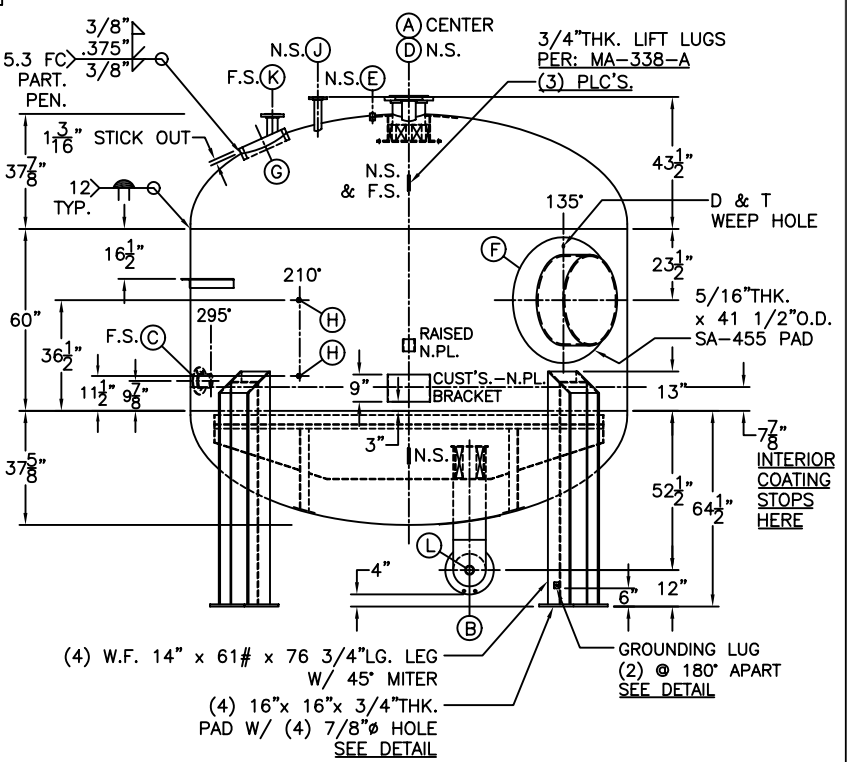
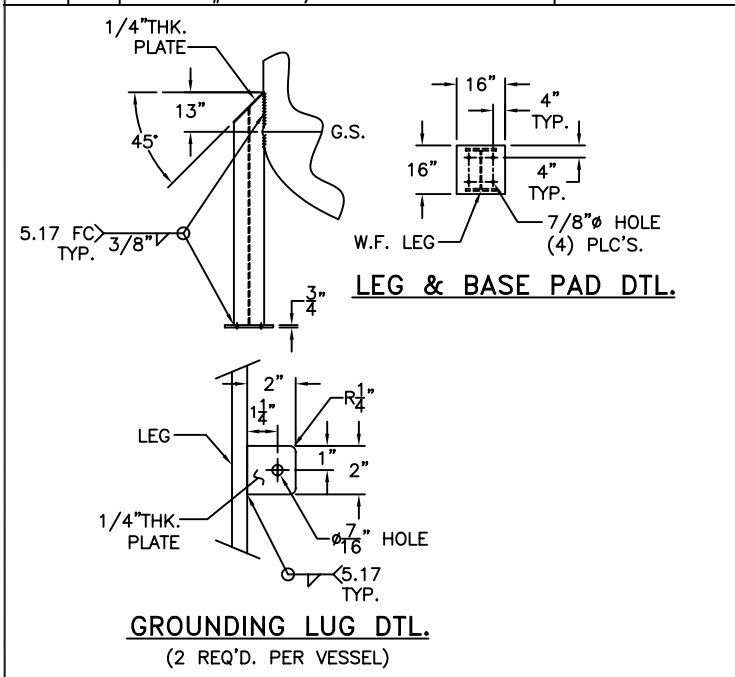
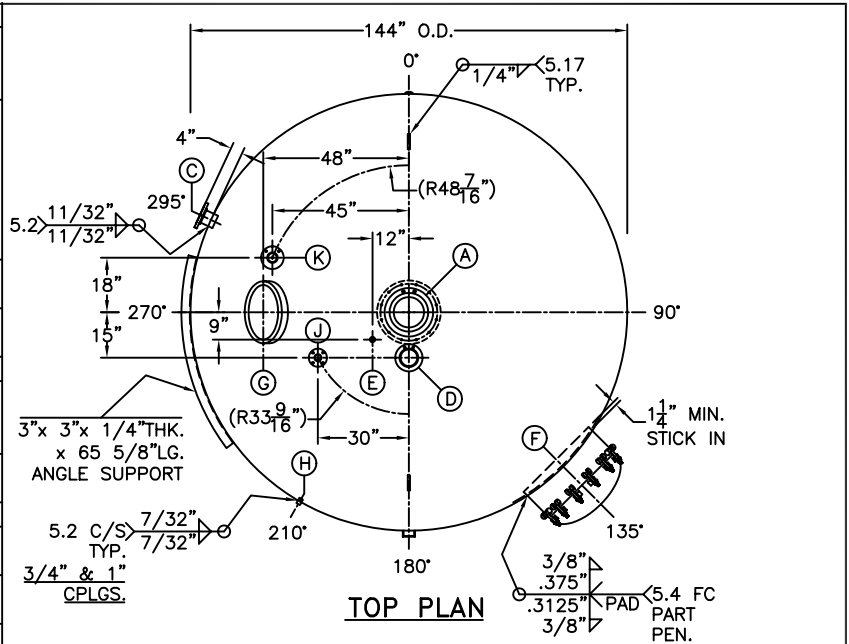


ITEM	QTY.	DESCRIPTION	FUNCTION
A	1	10"-150# LAP JOINT C/S FLG. W/ SCH. 80 C/S ASA LAP JOINT STUB END x 10"LG. W/ 316L S/S DIFFUSER W/ 316L S/S BLIND.	FEED WATER
B	1	10"-150# F.F.S.O. 316L S/S FLG. W/ SCH. 40 316L S/S PIPE x 5 3/8"LG. W/ SCH. 40-90° S.R. 316L S/S ELL. W/ SCH. 40 316L S/S PIPE x 30 1/2"LG. W/ 1/4"THK. x 12"DIA. 316L S/S PLATE W/ (L) 2"-3000# 316L S/S ELBOLET W/ 3/16"THK. x 20"O.D. SA-455 PAD	TREATED WATER
C	1	4"-150# R.F.S.O. C/S FLG. W/ SCH. 80 C/S PIPE x 5 5/16"LG.	MEDIA REMOVAL
D	1	4"-150# R.F.S.O. C/S FLG. W/ SCH. 80 C/S PIPE x 8 3/16"LG.	MEDIA FILL
E	1	1"-3000# 316L S/S FULL CPLG.	AIR RELEASE/VAC.
F	1	30" T-BOLT CLOSURE ASSEMBLY W/ DAVIT PER: SHT-1094-C & SHT-1121-C W/ 5/16"THK. x 41 1/2"O.D. SA-455 PAD	MANHOLE
G	1	14" x 18" M. WAY W/ 1 1/4"THK. x 4"LG. SA-516-70 RING.	MANHOLE
H	2	3/4"-3000# 316L S/S FULL CPLG.	SAMPLE
J	1	2"-150# R.F.S.O. C/S FLG. W/ SCH. 80 C/S PIPE x 11 5/8"LG.	COMPRESSED AIR
K	1	3"-150# R.F.S.O. C/S FLG. W/ SCH. 80 C/S PIPE x 11 3/4"LG.	RUPTURE DISK
L	1	2"-3000# 316L S/S ELBOLET.	DRAIN



SHELL / HEADS		NOTE:	
M.A.W.P.	100 PSIG. @ 125 °F	1) RIGHT HAND TANK (F-2-4 & F-4-4).	2) NOZZLE DETAILS PER: WK-973-C-1B.
M.D.M.T.	-20 °F @ 100 PSIG	3) PIPE SUPPORT CLIPS PER: WL-047-C-1B.	3) EFFLUENT SUMP BOX PER: WK-973-C-2B.
ASME SECTION	VIII DIV. 1, 2004 ADD 2004	4) HYDRO @ 140 PSIG. MIN.	
X-RAY	RT-4 SPOT ALL L.S. & G.S.		
GALLONS	7712 WT. 15155 LBS.		
SERIAL NO.			
N.B.			

SHELL / HEADS		NOTE:	
TOP-500" NOM.	SA-516-70 SMLS. 2:1 S.E. (460" MIN.)	1) HYDRO @ 140 PSIG. MIN.	
BTM-4375" NOM.	SA-516-70 SMLS. 2:1 S.E. (410" MIN.)		
500" SA-516-70			
VERT. WATER TANK			
SURFACE AREA =	507.5 SQ. FT.		
INSIDE: NEMEC SERIES 20			
POTAPOX 15-17 MILLS			
NO COATING IN			
BOTTOM 30" OF TANK			
OUTSIDE: NEMEC SERIES 27 FC			
TYPOXY 8-10 MILLS			
LEG-ZONE 28-15 KM.			
BY: E.S. / BILL SCALE: 3/8"=12"			
ROY E. HANSON JR. MFG.			
1924 COMPTON AVE.			
LOS ANGELES, CA 90011			

