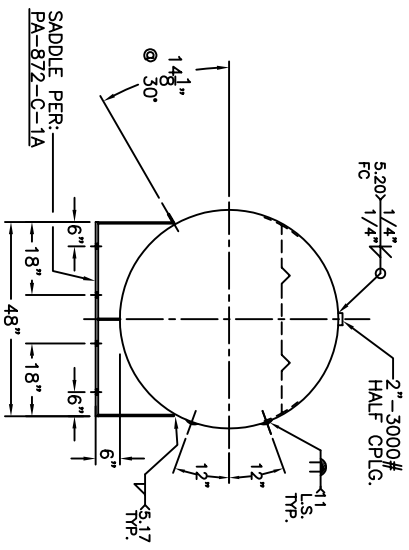


2"-300# R.F.W.N  
 FLG. W/SCH 160  
 SA-106-B  
 PIPE X 4 1/4" LG.  
 W/2"-300# R.F. BLIND FLG.  
 W/GASKET, BOLTS & NUTS



NOZ.	SIZE	SERVICE	VALVE
A	1/4"	FIXED OUTGAGE	BLEEDER
B	1/4"	PRES. GAGE	VISUAL GAGE
C	N/A	LIQUID LEVEL	JR. FLOAT GAGE
D	3/4"	TEMPERATURE	THERMOMETER
E	1 1/4"	DRAIN	REGO #7591U
F	1 1/4"	LIQUID OUT	REGO #3282A
G	1 1/4"	LIQUID FILL	REGO #3176
H	2"	RELIEF VALVE	REGO #7534G W/ADT.
I	2"	INSPECTION	N/A
J	3/4"	N2 INLET	REGO #3146
K	3/4"	TANK EQUILAZATION	REGO #3272E
L	3/4"	LIQUID RETURN	REGO #3146
M	1 1/4"	FILL EQUILAZATION	REGO #3282A

4) FLUSH ALL FNPT.  
 3) PLUG ALL OPENINGS AND SHIP W/3 PSIG. N2.  
 2) MAGNETIC PARTICLE ON ALL FILET WELDS.  
 NOTE: 1) HYDRO @ 325 PSIG. MIN.

HEADS	HEADS	FOR:	REV. 12-1-10
.500" SA-516-70 2.1 S.E. (.435" MIN.)	PA-872-C	DATE: 11-2-10	
4375" SA-455			
C.A. 0.100" INTERVALS			
M.A.W.P. 250 PSIG. @ 130 °F			
M.D.M.T. -20 °F @ 250 PSIG.			
ASME SECTION VIII DIV. 1, 2007 ADD 2009			
X-RAY: RT-1 FULL			
GALLONS: 2500			
SERIAL NO. 6607 LBS.			
N.B.			

BY: J.G. / B.C. SCALE: 1/2"=12"  
**ROY E. HANSON JR. MFG.**  
 1600 E. WASHINGTON BLVD.  
 LOS ANGELES, CA 90021